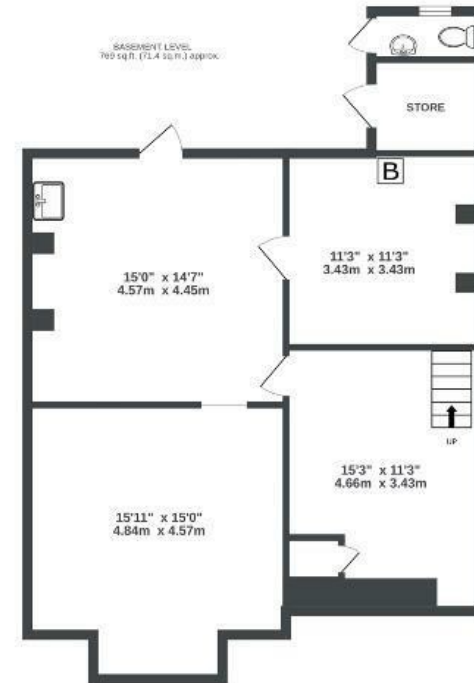


# Linden Road

## WESTBURY PARK

APPROXIMATE FLOOR AREA  
236.6 SQM / 2547 SQFT



Illustrations are for reference purposes only, measurements are approximate, not to scale.

**Boardwalk**

# Linden Road

WESTBURY PARK, BRISTOL



£850,000



4 Bedrooms



Bristol, BS6



2 Bathrooms

7RR

*"We have lived at Linden Road for the past 6 years. It's a wonderful family home with fantastic local schools, shops and pubs, the Westbury Tavern and Little Shop and Pantry just moments away. Linden Road is the perfect location, the Downs are within walking distance, along with Redland Green and Falldon Parks. The neighbours are fantastic and there's a real community feel, with an active WhatsApp group set up during the pandemic, which has continued to thrive. We will miss Linden Road, but know that it will also bring much happiness to another family."*

